

Rear Signal Relocation/Modification for Shadow 750 Aero 2004/05

Here is a couple pics showing what things look like before you start.

You can get familiar with what things look like
before and after the modification.



Before continuing, please read [disclaimer](#) on the site.

Now, here's how I removed my signals and
installed new ones on the license 'plate holder/light'.

1



2



3



These parts are from a 2004 Honda 600 VLX.

Next...

You need to remove the seat in order to get the fender off.

For procedures how to remove seat, click [HERE](#).

After the seat is off...

Here's how to remove the fender, chrome brackets and rear light wires.

4



5



6



7



8



The wires are color coded and are easy to connect and disconnect.

After the fender is off...

Here's how to remove the license 'plate holder/light' and brake light wires.

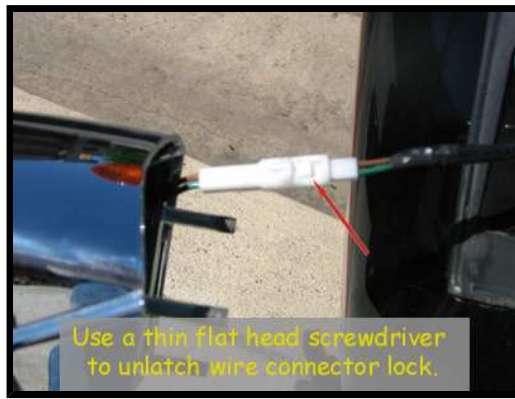
9



10



11



12



13



14



15



Now this is the tricky part.

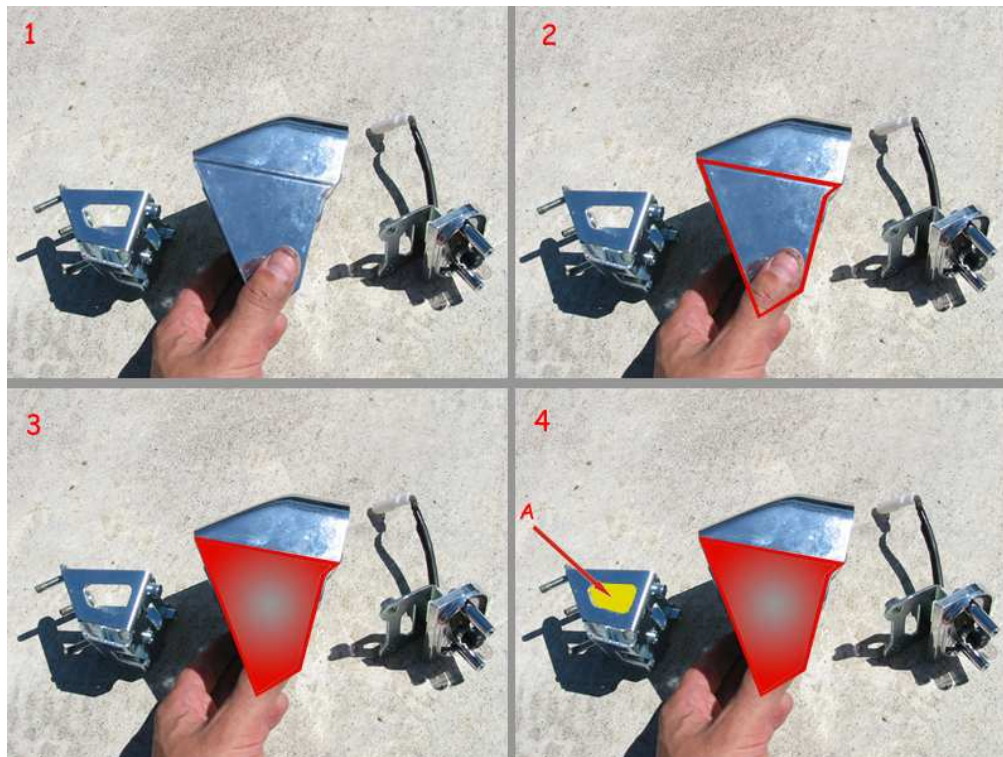
My camera ran out of batteries during this, too, so no pics.

I have used a virtual imaging demo via Photoshop so you can picture what I did next.

16

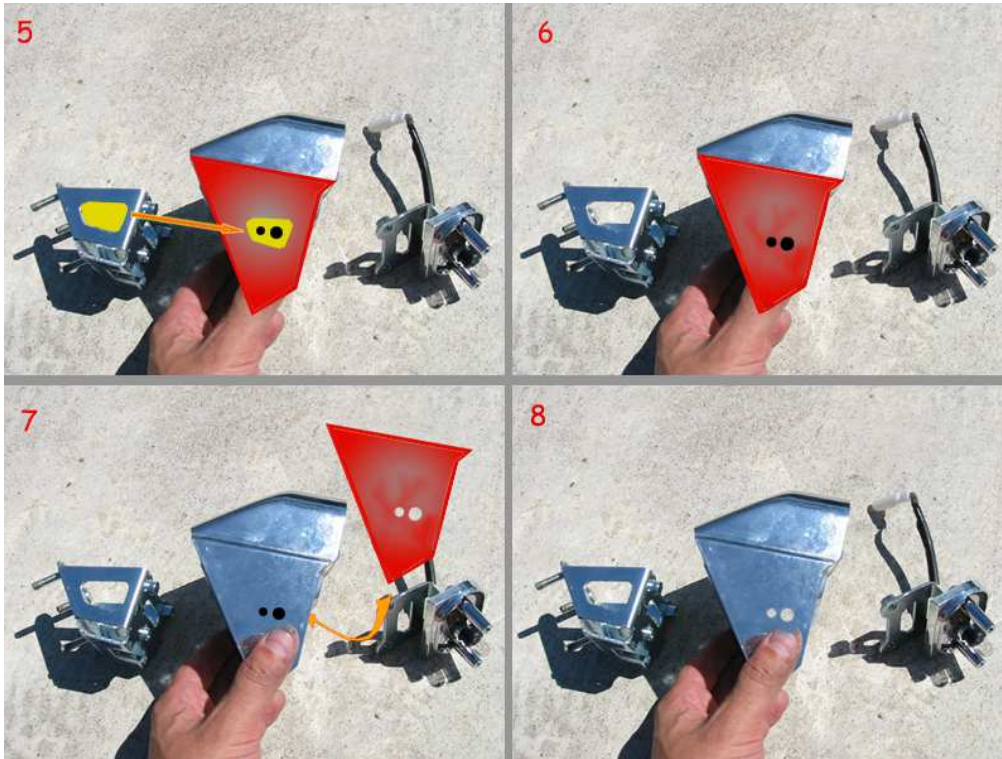
Follow along with these virtual pics and instructions on the bottom of the pics.

TIP: Bring one of the signals to a hardware store and get 5 washers and a lock nut that fit, for each side.



- The object is to drill two holes into the side of the 'plate holder/light'. (1)
- First make a template that outlines the bottom portion of the 'plate holder/light'. (2 - 3)
- You want to make sure your threaded supports on the 'new' signal clear the hole in the bracket marked by a red arrow and yellow highlight. (4)

17

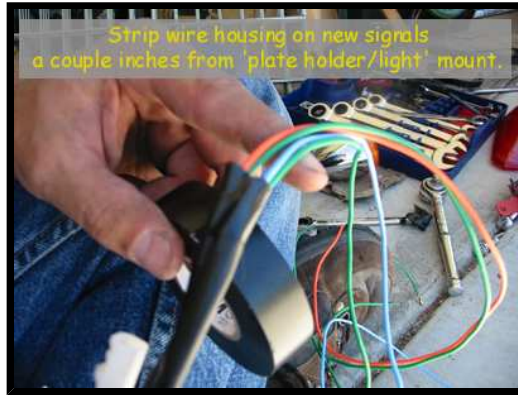


- Temporarily reassemble the bracket into the housing.
- Do your best to match up the bracket hole onto the template.(5)
- Once you measured out the appropriate size holes from the signal's bracket threads AND determined wear exactly the signal holes will best fit...apply them to the template.(5)
- Cut or drill out the holes in your template, line up the template properly and make your hole marks on both sides of the plate holder/light. (6 - 7)
- Check everything once more so everything lines up perfectly or as close as you can get.
- Start drilling using a small pilot drill bit. Move up to a larger drill bit and then a larger until you get the correct diameter as the signal's bracket threads. (8)
- Replace the 'plate holder/light' brackets back inside housing and reassemble them.
- The next step is to place the signal's bracket threads into the drilled holes.
- Using several washers, you can clear the inside 'plate holder/light' bracket near the drilled holes and use a lock nut to secure the signals into place. (I used 5 washers)
- I would highly recommend getting a 13 mm 'ratchet wrench'. Tightening the lock nut is difficult because of the lack of room in the 'plate holder/light' housing.

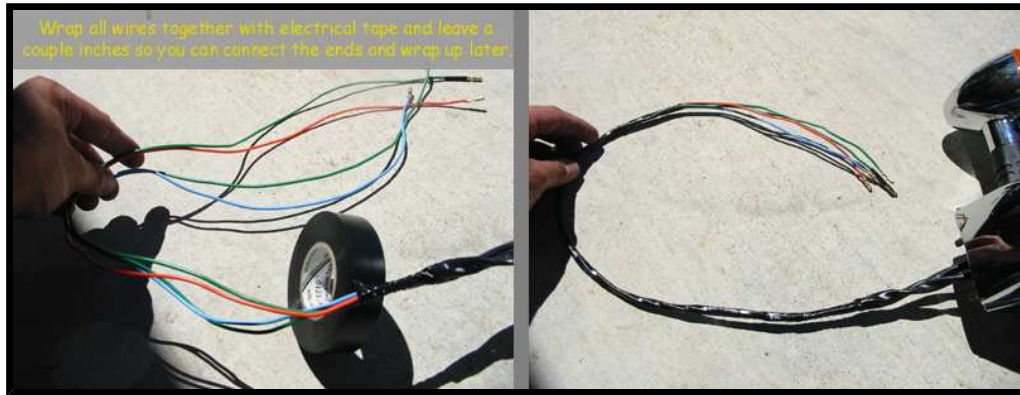
After the signals are mounted...

Here's how to wire the signals and lay the wire under fender.

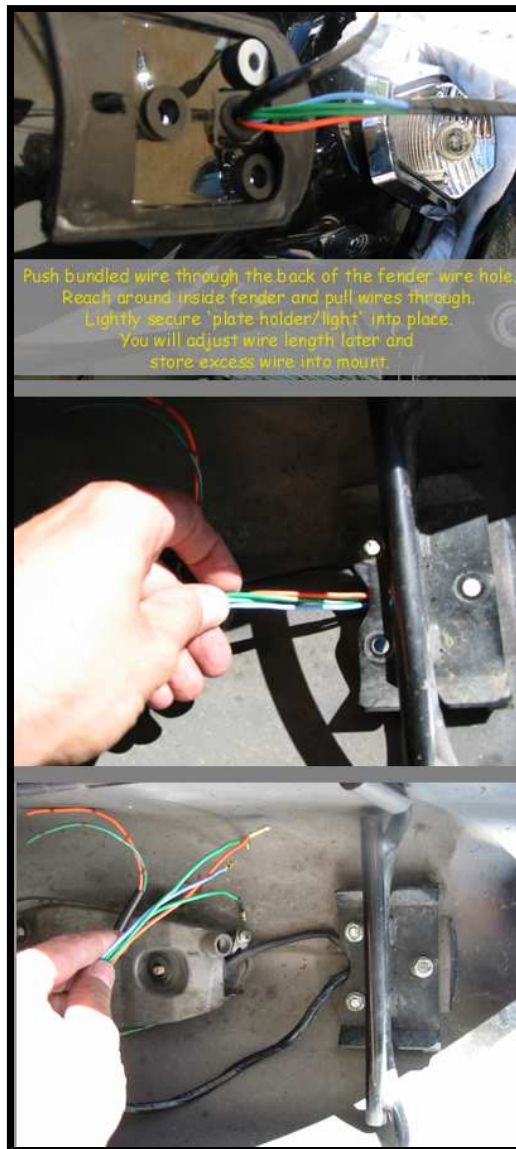
17



18



19



20

